

# Changing Course: Building a Low Carbon Transport Sector

Jamie Leather  
Asian Development Bank

**ADB Meeting on Transport and Climate Change**

December 13, 2009

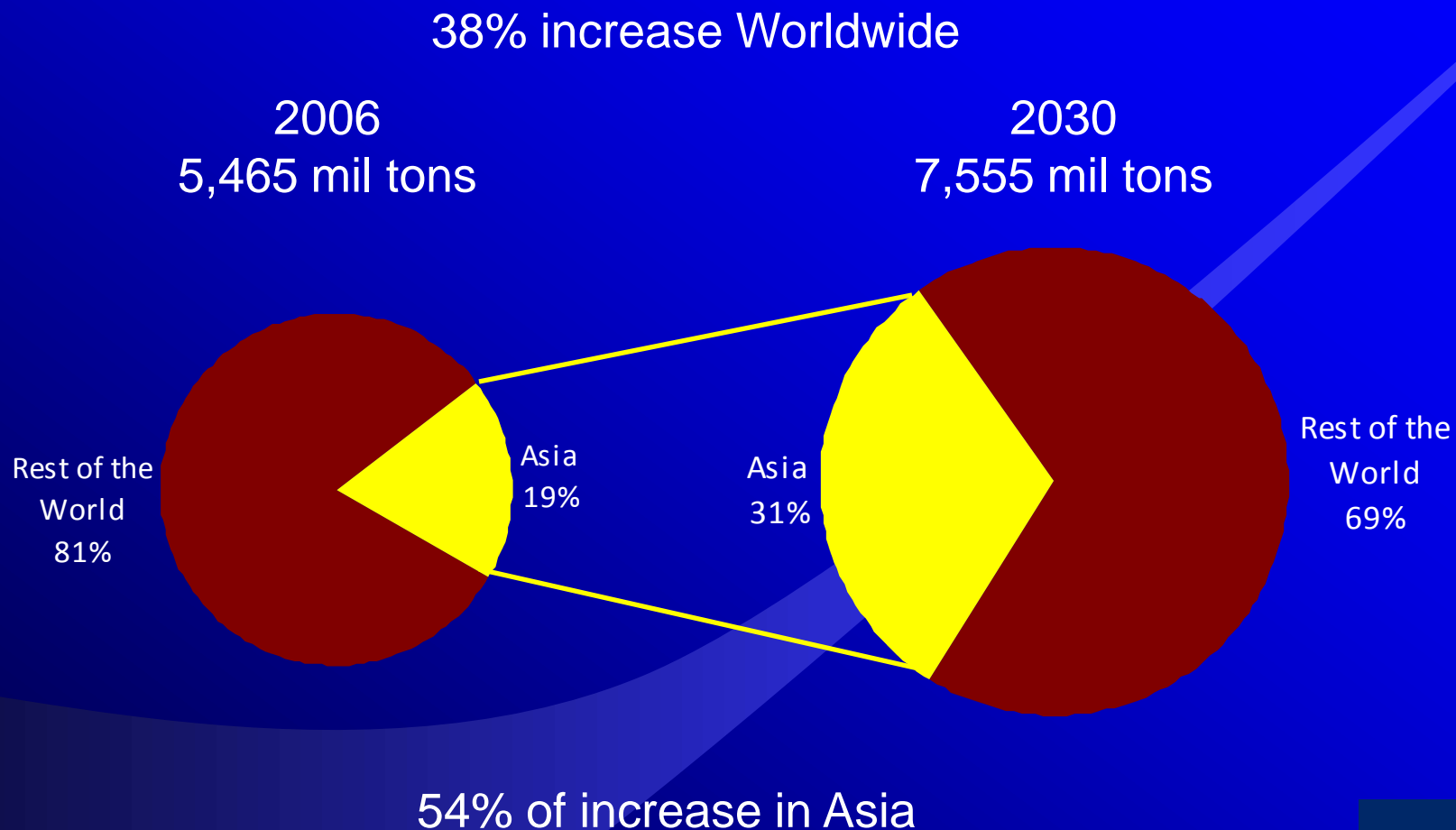
Copenhagen, Denmark

The ADB logo consists of the letters "ADB" in a white, serif font, centered within a dark blue square background.

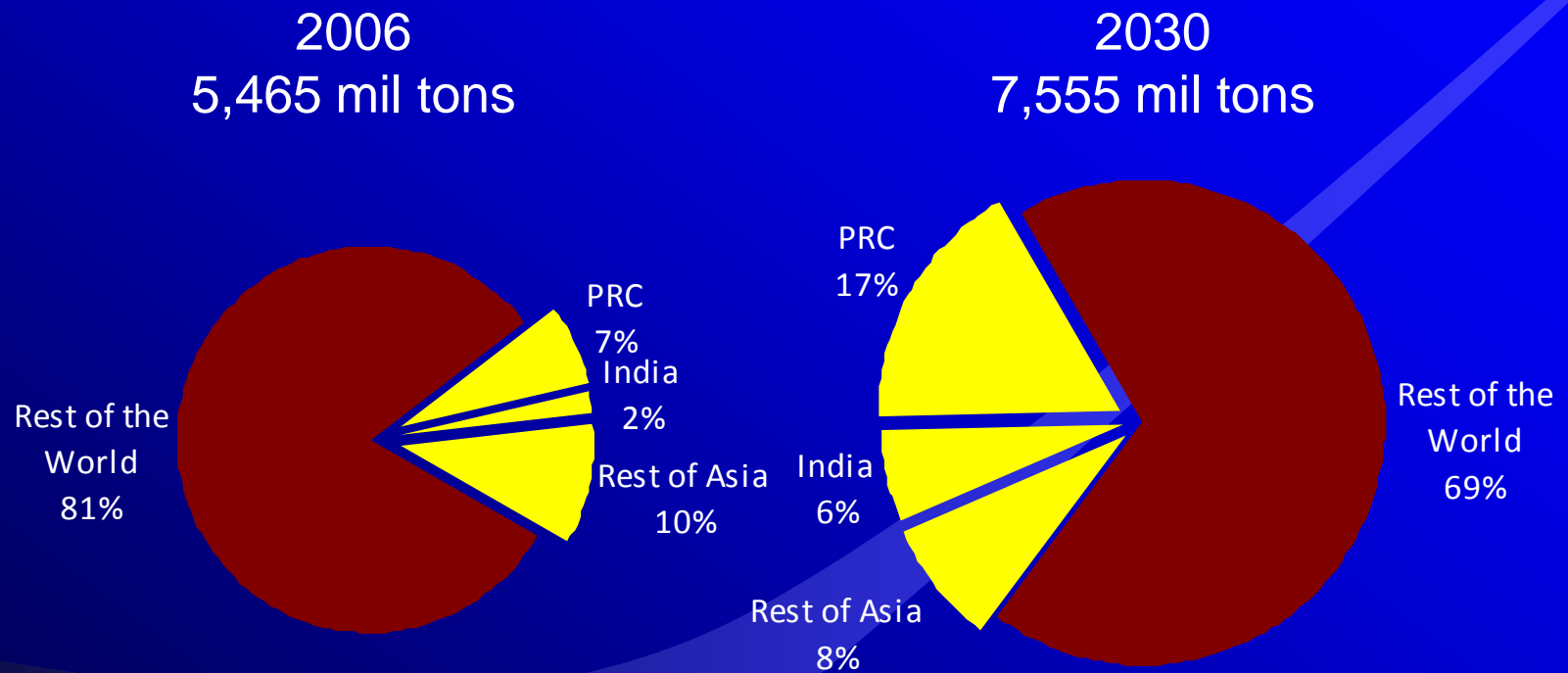
ADB

# THE PROBLEM

# Transport Sector CO<sub>2</sub> emissions

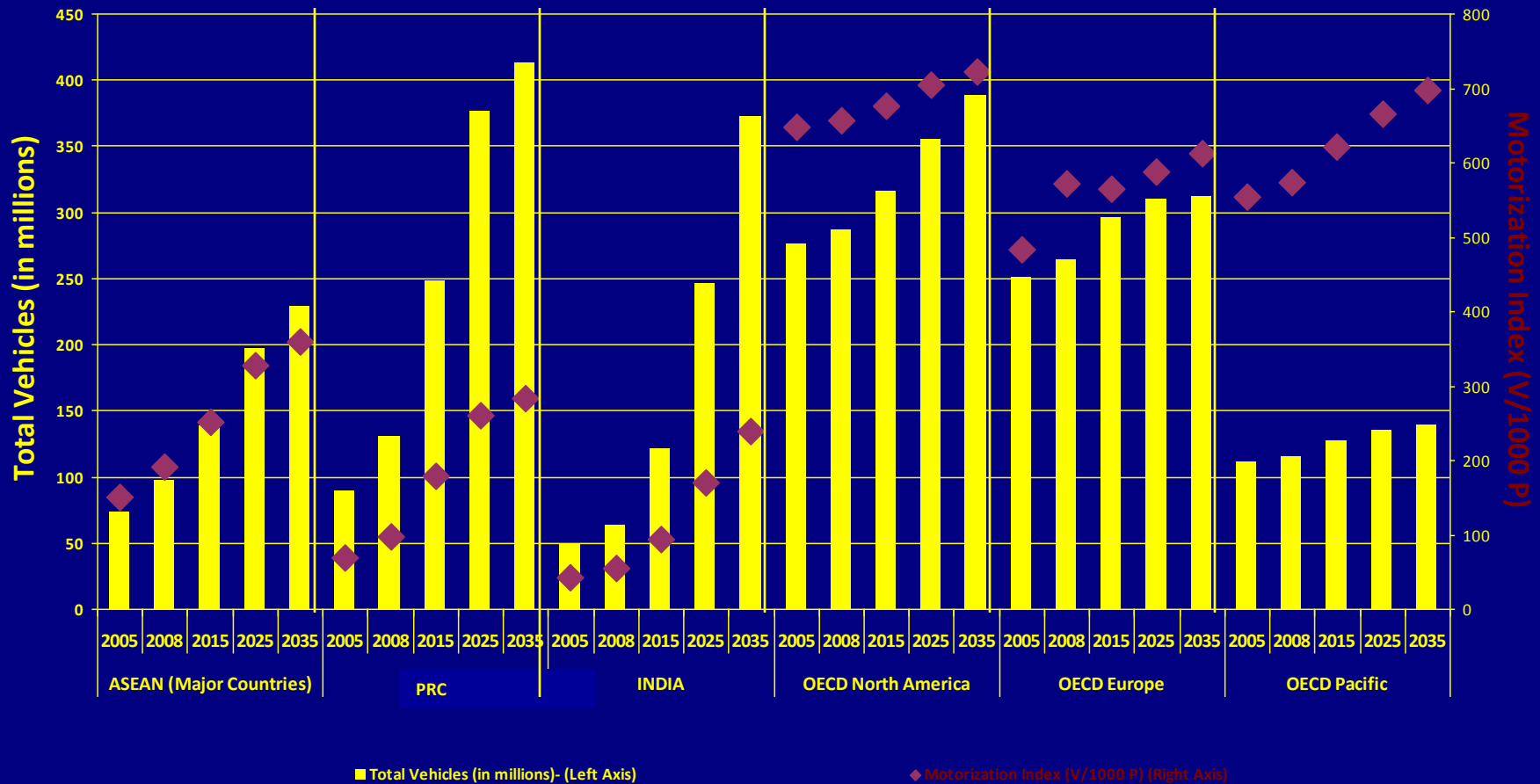


# Transport Sector CO<sub>2</sub> emissions

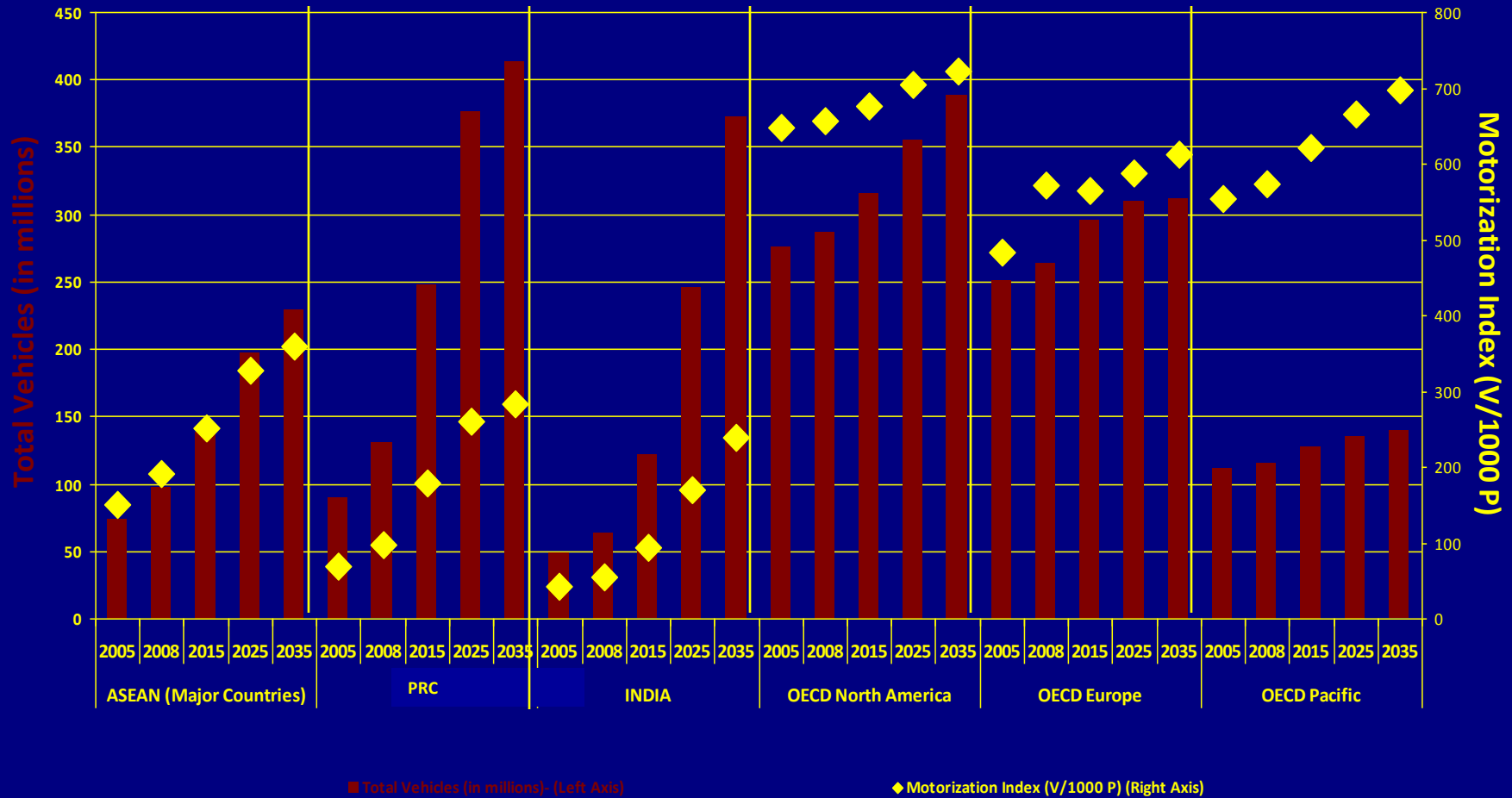


Source: IEA, World Energy Outlook 2008  
Note: Total emissions excludes international marine bunkers and international aviation

# Vehicle growth projections



# Motorization Index



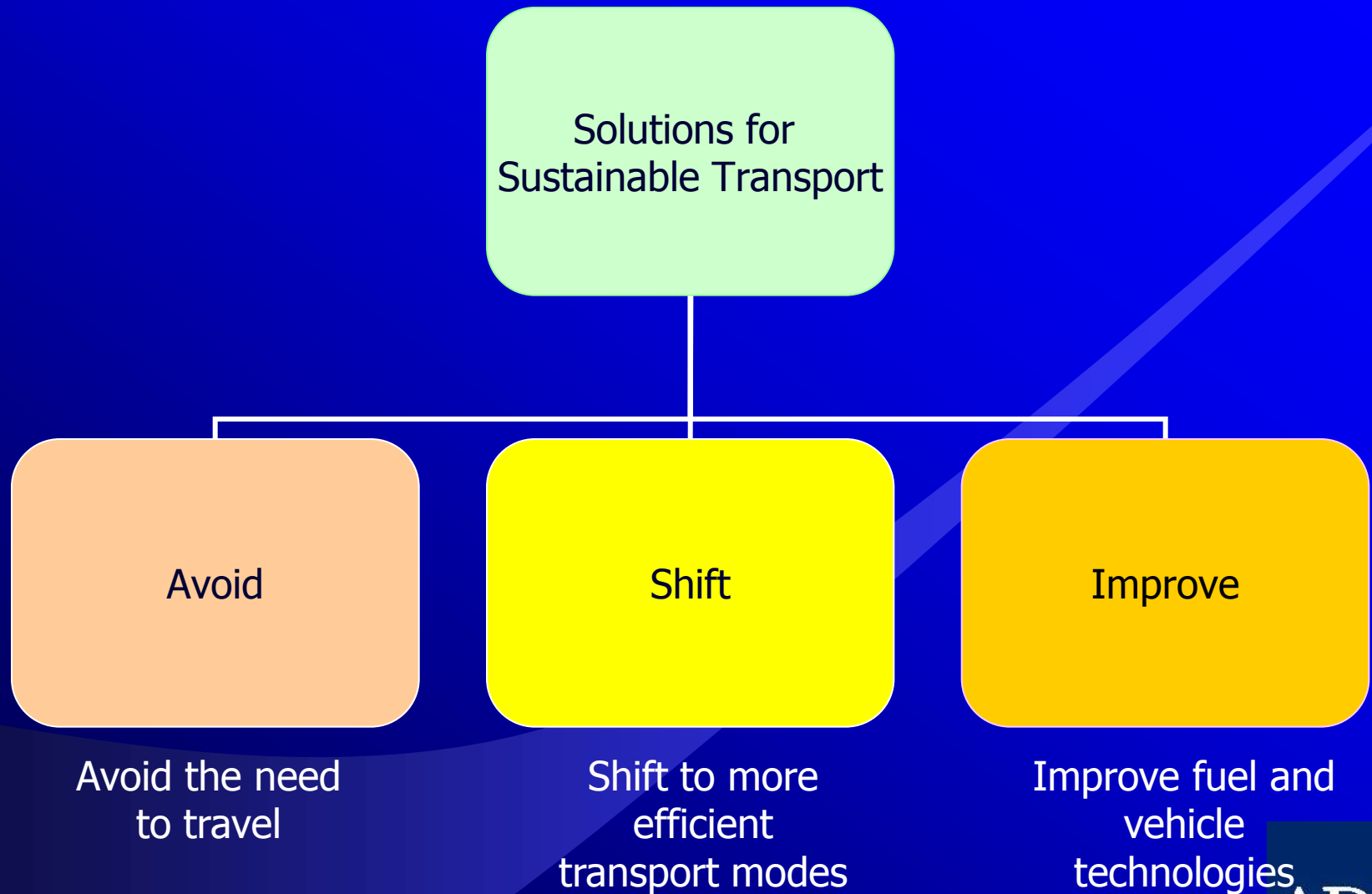
# Clean Development Mechanism

- CDM difficult to apply for transport (MRV)
  - 2 transport projects out of ~3000 registered
  - 24 out of ~4750 projects in the pipeline
  - 8 approved methodologies
  - 0.4% of the CERs issued

**Contrast 23% of CO2 emissions with 0.4% share of CERs**

# THE SOLUTIONS

# A Sustainable Transport Path



# Same Principles but Different Requirements

Principles	Developed Countries	Developing Countries
<b>Avoid</b>	Reduce travel through traffic demand management (TDM)	Avoid unnecessary generation of travel through land use planning, integrated land use and traffic management
<b>Shift</b>	Shift from private vehicles to non-motorized transport and public transport	Shift investment focus to non-motorized transport, public transport and long-distance rail or water transport
<b>Improve</b>	Clean up existing vehicles and fuels	Ensure that future vehicles are as clean as possible and improve attractiveness of public transport

# Relevant Transport Finance Post 2012 Climate Instruments

- Expanded and/or improved CDM
  - Scale of reduction/avoidance (programmatic)
  - Reduced transaction costs (MRV)
  - Additionality (effective implementation and enforcement)
  - Sectoral no-lose targets
- NAMAs applicable for transport (policy support)
- Co-benefit (gold standard)
- Finance to stimulate 'good (low carbon) transport'
- Adaptation of transport systems

**“Our Sustainable Transport Initiative will make more cities more ‘people-friendly’ and advance climate change mitigation objectives.”**

Haruhiko Kuroda  
President, Asian Development Bank  
2009 Delhi Sustainable Development Summit



Partnership on Sustainable  
Low Carbon Transport

**Thank you**

Jamie Leather  
[jleather@adb.org](mailto:jleather@adb.org)

**ADB**